

# RUISLIP CENTRAL HORTICULTURAL SOCIETY

## SCHEDULE FOR 2012

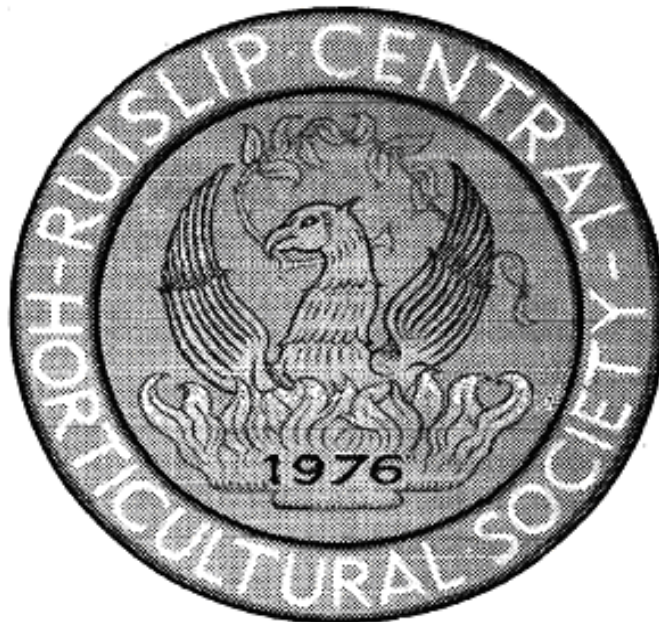
**SPRING - SATURDAY MARCH 31<sup>st</sup>**

**SUMMER - SATURDAY JUNE 23<sup>rd</sup>**

**AUTUMN - SATURDAY SEPTEMBER 15<sup>th</sup>**

**The Great Barn - Bury Street - HA4 7QL**

<b>ENTRIES</b>	<b>By 8.00pm Wednesday Before the Show.</b>
<b>STAGING</b>	<b>09:15 – 11:00 on day of show.</b>
<b>JUDGING</b>	<b>11.00 am.</b>
<b>SHOW OPENS</b>	<b>1.00 pm.</b>
<b>PRIZE GIVING</b>	<b>4.30 pm.</b>



The Society was formed in 1940. The current emblem commemorates the serious fire which destroyed our premises in 1976 but from which the Society like the Phoenix, rose again from the flames.

# SPRING SHOW Saturday 31<sup>st</sup> March 2012

## SECTION A - DAFFODILS

### Class

1. Six stems, one or more varieties, from any division.
2. One Stem, Trumpet (Division 1).
3. One Stem, Large Cupped (Division 2).
4. One Stem, Small Cupped (Division 3).
5. One Stem, Double (Division 4).
6. Three Stems, Trumpet (Division 1).
7. Three Stems, Large cupped (Division 2).
8. Three Stems, Small Cupped (Division 3).
9. Three Stems, Double (Division 4).
10. Three Stems, Poeticus of garden origin (Division 9).
11. Three Stems, Miniature daffodil, any varieties.
12. Three Stems, (except divisions 1,2,3,4 &9)
13. Novice Class - Three Stems, one or more varieties any Division.

NOTE: A miniature has a bloom, which is less than 2" (5cm) in diameter

Stems can have single or multi blooms. **Please name varieties where possible.**

**AWARDS:** *Daffodil Cup for the highest total points in Section A.*  
*Daffodil Society Certificate of Merit for the best exhibit in Section A*  
*Daffodil Society Certificate for the best bloom in Section A*

## SECTION B - GENERAL FLORAL

14. One Vase Tulips, 3 blooms single, one or more varieties.
15. One Vase Tulips, 3 blooms double, one or more varieties.
16. One Specimen Tulip bloom, any variety.
17. One Vase Wallflowers, 3 Stems, any varieties.
18. One Bowl Pansies and/or Violas, 6 blooms. Displayed in sand.
19. One Vase Polyanthus, 3 Stems.
20. One bowl of 6 Hellebore blooms on moss.
21. One Vase Muscari (Grape Hyacinths), 5 Stems.
22. One Vase any kind of flower (not shrubs) not in Classes 1-19.
23. One Vase, mixed flowers, any kind, (not shrubs).
24. One Vase Flowering Shrub or Tree, 3 Stems, 1 kind.
25. One Vase, Flowering Shrub or Tree, 3 distinct kinds.
26. Camellia, 3 flowers floating in a bowl. **MUST BE FLOATING**

**AWARDS:** *The H. Burden Cup for the highest total points in Section B.*  
*Award for the best exhibit in Section B.*

## **SECTION C - POT GROWN PLANTS**

27. Container - Daffodils.
28. Container - Tulips.
29. Container - Hyacinths.
30. Container, any other flowering Bulbs, one or more kinds.
31. One pot plant - flowering (Hardy Perennial).
32. One pot plant - foliage (Hardy Perennial).
33. One pot plant - flowering (Tender Perennial, i.e. House Plant).
34. One pot plant - foliage (Tender Perennial, i.e. House Plant).
35. Society Special - one vase one bloom.

**NOTE: Classes 27 - 34 inclusive; pot or containers are not to exceed 12" (30.5cms) Dia (inside of container) and MUST BE SEATED ON A SAUCER.**

**AWARDS:** *William King Cup for the highest total points in classes 14-35.*  
*Award for the best exhibit in Section C.*  
*Award for society special class 35.*

## **SECTION D - CACTI AND SUCCULENTS**

36. Rebutia Group - 2 Plants (includes Aylosteria, Sulcorebutia & Weingartia).
37. Neoporteria Group - 2 Plants (inc.: Horridocactus, Islaya & Neochilenia).
38. Coryphantha Group - 1 Plant (includes Acharagma, Neobesseya, Cumarinia, Escobaria and Ortegocactus).
39. Mammillaria Group - 2 Plants (includes Cochemiea, Dolichothele & Mamillopsis).
40. Stenocactus Group - 1 Plant (includes Echinofossulocactus).
41. Espostoa & Cleistocactus Sub-Groups - 1 Plant (includes Oreocereus Thrixanthocereus, Vatricania & Morawetzia).
42. Cacti - 3 Plants. (Max. Pot size 4½")
43. Aloe Group - 1 Plant (includes Bulbine, Chamaealoe and Lomatophyllum).
44. Gasteria Group - 2 Plants.
45. Adromischus - 2 Plants.
46. Crassula and Rochea - 2 Plants.
47. Cotyledon, Tylecodon, Kalanchoe and Bryophyllum – 1 Plant.
48. Haworthia Group - 2 Plants (includes Astroloba & Poellnitzia).
49. Succulents - 3 Plants. (Max. Pot size 4½")
50. Group of Cacti and/or Succulents arranged for decorative effect in a space not exceeding 18"x18". Backgrounds, stands, accessories etc. may be used.
51. Novice Class - Cacti and/or Succulents - 3 Plants

**NOTE: The lists of Groups shown after some classes are not complete. Refer to the B.C.S.S. Handbook (current edition) of Shows for full details.**

**AWARDS:** *Arthur Boarder Award for the best exhibit in Section D.*  
*Mrs. Harley Cup for the highest total points in Classes 36 - 42.*  
*Harry Newland Cup for the highest total points in Classes 43- 49.*

## **SECTION E - FLORAL ART**

- 52. Mellow Yellow. - An exhibit open staged.
- 53. Decoration with Egg(s). - An exhibit open staged.
- 54. Spring has Sprung. - An exhibit to be displayed in an alcove (supplied)  
(alcove is 50cm W x 25 D x 100 H)

**AWARDS:** *Muriel King Cup & Gift Voucher for the highest total points in Section E.*  
*Peggy Browne Salver for the best exhibit in Section E.*

## **SECTION F - HANDICRAFTS**

- 55. A hand knitted garment.
- 56. An article of embroidery (with cottons, silks or wool).
- 57. An item of woodwork.
- 58. A stuffed toy.
- 59. A painting in water colour or oil
- 60. A sketch or drawing, any medium.
- 61. A handmade greetings card.
- 62. Any other one item not mentioned above

Note: All Items entered in the Handicrafts section must have not been previously entered in a RCHS show.

**AWARD:** *Award for best exhibit in section F*

**Children are welcome to enter in the handicraft section and will be judged on their own merit - age to be stated on entry form (16 or under only). Special award.**

*Please Note: Due to the lack of entries in the Children's section over the past few years we have now decided to replace it with a Handicrafts section for Adults and Children at all three shows. We still wish to encourage children to enter in any class in all the shows, but they will be judged as an Adult except for the Handicrafts section.*

## **SECTION G - DOMESTIC**

66. Seville orange marmalade - (made this year from fresh oranges).
67. Chutney - made in the last 12 months.
68. Jam - rhubarb and ginger.
69. Victoria sponge - with jam filling only.
70. 3 jam puffs - triangle shaped
71. Rhubarb and orange crumble
72. Treacle tart - own recipe.
73. 2 Chelsea buns.
74. Bread and butter pudding – see recipe at bottom of this page.

**NOTE: In classes 66 - 68 standard glass jars must be used. Approx. 1lb (450g). All jars must be labelled.**

**AWARDS:** *Joyce Daniels Cup for the highest total points in the Domestic Section.  
Award for best exhibit in section G.*

## **SECTION H - PHOTOGRAPHIC**

PRINTS OR ENLARGEMENTS IN COLOUR OR BLACK & WHITE. PICTURES MAY BE DIGITALLY ENHANCED Max size up to A4.

75. At its peak.
76. Plant texture.
77. Upon reflection.
78. Municipal garden.

**Exhibits must not have been previously entered at RCHS Shows**

**AWARDS:** *Geoff Ash Cup for the best exhibit in the Photographic Section.*

Spring Show - Section G - Class74

### **Bread & Butter Pudding**

*Ingredients. 8 slices bread from small loaf - buttered, 10g candied orange peel finely chopped, 50g currants, 60ml milk, 60ml double cream, 50g caster sugar, grated rind small lemon, 3 eggs & freshly grated nutmeg. 1.2 litre oblong dish well buttered.*

*Method. Cut each slice of bread in half leaving crusts on. Arrange one layer of bread over the base of the dish. Sprinkle on the candied peel and half the currants then cover with another layer of bread followed by the rest of the currants. In a separate jug mix together the milk, cream then stir in the caster sugar & lemon rind. Whisk the eggs together separately then into the milk mixture, pour the whole lot over the bread and sprinkle on some nutmeg. Bake in oven 180° C for 30-40 minutes.*

# SUMMER SHOW Saturday 23rd June 2012

## SECTION A - ROSES

Class

### **Large Flowered Roses - Specimen Blooms**

1. One Vase of 1 bloom.
2. One Vase of 3 blooms.
3. **Large Flowered Roses not disbudded.**  
One Vase of 3 stems, 1 or more cultivars.
4. Three stage blooms - One vase, 3 stems, one cultivar, and 3 blooms.  
One at 'bud' stage, one at 'perfect' stage and one at 'full bloom' stage.

### **Cluster Flowered Roses**

5. One vase one stem
6. One Vase of 3 stems, 1 or more cultivars.
7. One Vase of 5 stems, 1 or more cultivars.

### **Ramblers / Climbers**

8. One Vase of Rambler Roses and/or Climbers, arranged for frontal effect.  
(excluding Climbing Sports of Large flowered or Cluster flowered).

### **Wild, Old or Modern Roses**

9. One vase, 3 sprays, one or more cultivars.

### **Miniature Roses**

10. One Vase of miniature Roses, 1 or more cultivars.

### **Open Class**

11. One Bowl of Roses (any type) 12 stems. To be viewed all round.
12. Rose Pot Grown - Any type. **Pot or container is not to exceed 12" (30.5cm) inside rim. Pots must be on saucers**

## SECTION B - ROSES - NOVICES ONLY

### **Large Flowered Roses**

13. One Vase 1 bloom.
14. One Vase of 2 blooms, 1 or more cultivars.

### **Cluster flowered Roses**

15. One Vase one Stem

**AWARDS:** *The Rose Bowl to the competitor gaining 1st prize in Class 3.*  
*The Rose Jones Salver to the competitor gaining 1st prize in Class 11.*  
*The Witchell Cup for the highest total points in Section A.*  
*The Reg and Rose Langston Rose Award for the best exhibit in classes 5,6,7 & 15.*  
*The Garden News Shield for the highest total points in Section B*

## SECTION C - GENERAL FLORAL

16. One vase Sweet Peas, 6 stems, any one cultivar.
17. Sweet Peas - Three vases, three stems, three distinct cultivars
18. One vase, Dianthus any variety, max 4 stems.
19. One vase Allium, 1 stem, any cultivar.
20. Three vases of cut flowers, 3 distinct kinds, not to exceed 5 stems in each.  
(excluding Sweet Peas, Roses and Shrubs).
21. One vase of cut flowers, mixed, not to exceed 10 stems.  
(excluding Sweet Peas, Roses and Shrubs).
22. One vase one stem Lupin.
23. One vase any perennial (any one kind) except Roses.
24. One vase of mixed perennials not less than 3 kinds, except Roses.
25. One vase of any annual or biennial, excluding Sweet Peas, any one kind
26. Six Pansies and/or Violas, displayed in own container.
27. Three blooms, Clematis, in a bowl. Must be floating.
28. Vase of mixed Hosta leaves. Max 8 leaves.
29. One vase, one stem of Delphinium.
30. 5 Delphinium florets, in a bowl. Must be floating.
31. One vase of any shrubs, 3 stems (excluding roses)
32. One pot plant flowering (Hardy Perennial). (Excluding Pelargoniums & Roses).
33. One pot plant foliage (Hardy Perennial).
34. One pot plant flowering (Tender Perennial, i.e. House Plant).
35. One pot plant - foliage (Tender Perennial, i.e. House Plant).
36. One Patio container – mixed arrangement – max size 24”.
37. A vase of mixed herbs, max 7 stems.
38. One vase one stem Iris.
- 38A. Society Special (to be available at the Spring Show)

**NOTE: A perennial includes all plants that are not annuals or biennials.**

**Classes 32 - 35 inclusive; pot or containers are not to exceed 12” (30.5cms) Dia (inside of container) and MUST BE SEATED ON A SAUCER.**

**AWARDS:** *The Glagenbury Floral Cup for the highest total points in Section C.*  
*The Sweet Pea Cup for the highest total points in classes 16 - 17.*  
*Award for best exhibit in section C.*  
*Award for Society Special Class 38A*

## SECTION D - PELARGONIUMS

39. One plant Regal, flowering.
40. One plant Zonal, flowering.
41. One plant Scented Leafed.
42. One plant Ivy Leafed.
43. One plant, miniature. pot not to exceed 3½” (9cm) or dwarf pot not to exceed 4½” (12cm).
44. Six Zonal pips, one distinct cultivar - Boxes provided.

**NOTE: Classes 39 - 43 inclusive; pot or containers are not to exceed 12” (30.5cms) Dia (inside of container) and MUST BE SEATED ON A SAUCER.**

**AWARDS:** *The Pelargonium Cup for the highest total points in Section D*  
*Award for the best exhibit in Section.D.*

## **E - FRUIT & VEGETABLES**

45. Raspberries, 6, one cultivar.
46. Gooseberries, 6, one cultivar.
47. Red currants, 3 bunches, one cultivar.
48. Black currants, 3 bunches, one cultivar.
49. Strawberries, 6, one cultivar.
50. Any other fruit, one cultivar, number at the discretion of exhibitor.
51. Rhubarb, 3 sticks, one cultivar.
52. Lettuce, 3, one cultivar.
53. Spring Cabbage, 2, one cultivar.
54. Radish, 6, one cultivar.
55. Any other vegetable, one cultivar, number at the discretion of the exhibitor

**NOTE: All soft fruit must be shown with stalk and/or calyx attached.**

**Brassicas must be shown with approx. 3" (7.5cm) of stem.**

**Lettuce must be shown complete with roots, washed**

**AWARDS:** *The Tilney Challenge Cup for the Highest Total Points in Section E.  
Award for the best exhibit in Section E.*

## **SECTION F - FLORAL ART**

56. Olympic Sport - an exhibit to be displayed in an alcove (supplied)  
(alcove is 50cm W x 25cm D x 100cm H)
57. Table Centre - Celebrating Diamond Jubilee - an exhibit to be open staged.
58. Celebration - an exhibit incorporating a wine glass - to be open staged.

**AWARDS:** *Kenneth Wood Cup and Gift voucher for the highest total points  
in Section F. Award for best exhibit in Section F.*

## **SECTION G - HANDICRAFTS**

59. A hand knitted or crocheted garment.
60. An item of woodwork.
61. A painting in oil or acrylic.
62. Stitch work by hand or machine.
63. Any other craft item not mentioned above.

Note: All Items entered in the Handicrafts section must not been previously entered in a RCHS show.

**AWARD:** *Award for best exhibit in section G*

**Children are welcome to enter in the handicraft section and will be judged on their own merit – age to be stated on entry form (16 or under only). Special award.**

## **SECTION H - DOMESTIC**

- 64 Strawberry Jam.
- 65 Sauce any flavour.
- 66 Waldorf Salad – 1 portion
- 67 Quiche – ham cheese etc.
- 68 Summer pudding - individual.
- 69 Carrot cake, own recipe
- 70 Cream slices – 3 of.
- 71 Plaited loaf.
- 72 Queen of puddings – see recipe on page 10.

**AWARD:**     *The Patterns Cup for highest total points in Section H.*

## **SECTION I - CACTI & SUCCULENTS**

- 73 Echinocereus Group - 2 plants (includes Wilcoxia).
- 74 Parodia Group - 2 plants (includes Brasilicactus, Notocactus & Wigginsia).
- 75 Gymnocalycium Group - 2 plants (includes Brachycalycium & Neowerdermannia).
- 76 Echinopsis Group including intergeneric hybrids – 2 plants (includes Acanthocalycium, Chamaecereus, Lobivia, Mila, Setiechinopsis, Soehrensia & Trichocereus).
- 77 Mammillaria Group - 2 plants (includes Cochemiea, Dolichothele & Mamillopsis). (Maximum pot size 5").
- 78 Thelocactus Group - 1 plant (includes Ancistrocactus, Glandulicactus, Hamatocactus & Neolloydia).
- 79 Cacti - 2 plants. (Maximum pot size 5").
- 80 Echeveria Sub-group including intergeneric hybrids - 2 plants (includes Dudleya, Graptopetalum, Pachyphytum & Tacitus).
- 81 Aeonium, Sedum and Sempervivum Sub Groups - 2 plants. (includes Greenovia, Monanthes, Lenophyllum, Umbilicus, Jovibarba, Orostachys & Rosularia).
- 82 Agave Group - 1 plant (includes Beaucarnea, Calibanus, Dasylyrion, Nolina & Yucca).
- 83 Euphorbia Group - 2 plants
- 84 Pachypodium Group - 1 plant (includes Adenium & Plumeria)
- 85 Cristate, Monstrose or Variegated Succulent - 1 plant (excluding Cacti).
- 86 Succulents - 2 plants. (Maximum pot size 5").
- 87 Group of cacti and/or Succulents arranged for decorative effect in a space not exceeding 18" x 18". Backgrounds, stands, accessories etc. may be used.
- 88 Novice Class - Cacti and/or Succulents - 2 plants.
- 89 Miniature garden of cacti and/or Succulents.

**NOTE:**     **The lists of genera shown after some classes are not complete.**  
              **Refer to the B.C.S.S. Handbook of Shows for full details.**

**AWARDS:** *The Arthur Boarder Award for the best exhibit in Section I.*  
              *The 'Hillingdon' Cactus Cup for the highest total points in classes 73 - 79.*  
              *The Aslet Cup for the highest total points in classes 80 – 86.*

-----“-----  
***Ducks Hill Nursery Award for best exhibit in Show***

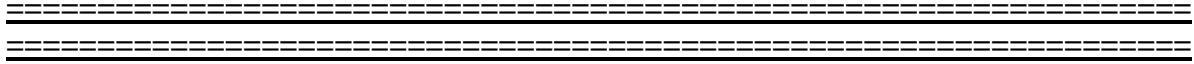
## SECTION J - PHOTOGRAPHIC

PRINTS OR ENLARGEMENTS IN COLOUR OR BLACK & WHITE. PICTURES MAY BE DIGITALLY ENHANCED Max size up to A4.

- 90. RHS or NT garden
- 91. Its a plant's life
- 92. Old garden gate
- 93. Gnarled tree trunk

**Exhibits must not have been previously entered at RCHS Shows**

**AWARD:** *an award for the best exhibit in the Photographic Section.*



### Summer Show - Section H - Class 72

#### Queen of Puddings

*Ingredients. 570ml milk, 10g butter, 110g fresh white breadcrumbs, 50g caster sugar, 1 tea spoon grated rind lemon, 2 eggs & 3 level tablespoons raspberry jam. Buttered 850ml oval pie dish.*

*Method. In a saucepan bring the milk to the boil, remove from heat and stir in the butter, breadcrumbs, half the sugar & lemon rind. Leave to cool for 20min. Separate the eggs, beat the yolks and add them to the cooled breadcrumb mixture. Poor it all into the pie dish and spread out evenly. Bake in oven for 35-40 min at 180oC or until set. In the mean time in a small saucepan melt the jam over a low heat and when the pudding is ready poor over the jam evenly.*

*Next beat the egg whites until stiff then whisk in the remainder of the sugar and spoon the meringue mixture over the pudding followed by a sprinkling of caster sugar. Return to the oven for 10-15 min until golden brown.*

\*\*\*\*\*

**Please note this Schedule and the latest issue of the Bulletin is available on the RCHS web site at :-**

<http://www.succulent-plant.com/ruislip/index.html>

# AUTUMN SHOW Saturday 15th September 2012

## SECTION A - DAHLIAS

1. One specimen bloom, large or giant, cactus or decorative.
2. One specimen bloom, medium decorative or cactus.
3. One specimen bloom, miscellaneous.
4. One vase, 3 blooms, small or miniature decorative, 1 or more cultivars.
5. One vase, 3 blooms, small or miniature cactus, 1 or more cultivars.
6. One vase, 3 blooms, small or miniature ball, 1 or more cultivars.
7. One vase, 3 blooms, pompon, 1 or more cultivars, under 52mm diameter.
8. One vase, 3 blooms, water lily type, 1 or more cultivars.
9. One vase, 3 blooms, medium cactus, 1 or more cultivars.
10. One vase of any type or types of Dahlia arranged for frontal effect (any amount).
11. Three vases, 3 blooms in each. Each vase to contain one type of Dahlia, 1 vase decorative, 1 vase cactus, 1 vase any other type. Any cultivar or cultivars in each vase.
12. Novice Class - One vase, 3 blooms, any type, 1 or more cultivars.

**AWARDS:** The K. Wood Challenge Cup for the highest total points in Section A.  
The Symondson Cup to the 1st prize-winner in Class 12.  
The Thornton Cup for the best exhibit in Section A.

## SECTION B - GENERAL FLORAL

13. One vase, large flowered. rose, 1 bloom.
14. One vase, large flowered. roses, 1 cultivar, 3 blooms
15. One vase, large flowered. roses, 3 stems 1 or more cultivars.
16. One vase, cluster flowered (Floribunda) roses, 1 stem.
17. One vase of roses, not more than 12 stems.
18. Three vases of cut flowers, 3 distinct kinds, 1 kind in each vase.
19. One vase annuals, 1 or more kinds, 5 stems.
20. One vase of Liliium, 3 stems, 1 or more cultivars.
21. One vase hardy herbaceous perennials, 3 stems.
22. One patio container, flowering, pot not to exceed 24”(60cm) at widest point.
23. One patio container, foliage, pot not to exceed 24” (60cm) at widest point.
24. One vase of ornamental berries, up to 3 stems, one or more kinds.
25. One Fuchsia, pot grown.
26. One pot - flowering, pot grown, other than Fuchsia.
27. One pot - foliage, pot grown. (no flowers visible)
28. One pot – Begonias foliage.
29. Three pot plants, pot grown. (one single plant per pot)
30. One pot - Coleus.
31. One vase flowering shrub. max 5 stems, 1 or more cultivars.
32. One vase Anemone Japonica, 3 stems one cultivar.
33. One vase – foliage – max10 stems.
34. One vase of grass Panicles, 1 or more kinds.
35. One vase, Fern Fronds, any cultivar, max 5 stems.
36. Top Vase – RCHS Special Class. (See Page 16)
- 36A Society Special (to be available at the Spring Show)

Continued on Page:- 12

## **SECTION B - GENERAL FLORAL (Continued)**

**NOTE: Classes 25 – 30 inclusive; pot or containers are not to exceed 12” (30.5cms) Dia (inside of container) and MUST BE SEATED ON A SAUCER.**

**AWARDS:** *The Rev. Mortimer Cup for the highest total points in Section B.  
Award for the best exhibit in Section B.  
The Samuel Cup for Best Rose exhibit.  
Garden Centre voucher for 1<sup>st</sup> prize in class 36.  
Award for Society Special Class 36A*

## **SECTION C – VEGETABLES**

37. 9 Runner beans, 1 cultivar.
38. 6 French beans, 1 cultivar.
39. 3 Beetroots, 1 cultivar.
40. 1 Cabbage, 1 cultivar.
41. 3 Carrots, 1 cultivar.
42. 3 Courgettes, 1 cultivar, (10 -20 cm long) or 7.5 cm diameter for round varieties
43. 1 Cucumber, 1 cultivar.
44. 3 Onions from sets, 1 cultivar, dressed.
45. 3 Onions, spring sown. 1 cultivar, dressed.
46. 2 Lettuces, 1 cultivar.
47. 2 Marrows or squashes (not pumpkins), 1 cultivar.
48. 5 pods Peas, 1 cultivar.
49. 4 Potatoes, 1 cultivar.
50. 9 Shallots, 1 cultivar.
51. 5 Tomatoes, 1 cultivar.
52. 6 Cherry tomatoes, 1 cultivar.
53. 3 Parsnip, 1 cultivar.
54. 2 specimen Leeks.
55. Any other vegetable, not specified in the Schedule. One cultivar, number at discretion of exhibitor.
56. Collection of specimen salad vegetables, prepared, 3 kinds, 3 of each, selected from beetroot, cucumber, lettuce, tomatoes, celery, onion, pepper, radish.
57. Vegetable collection of 5 kinds, from classes 37-54 (same number as per class) and from 1 cauliflower or 1 celery. To occupy space of not more than 3' frontage, backboards allowed.
58. Top Tray - RCHS Special Class. (see page 17)

**NOTE :** **Brassica's must be shown with approx. 3" (7.5cm) of stem. Parsnips, carrots, beetroot must be shown with approx. 3" (7.5cm) of tops. Lettuce must be shown complete with roots, washed.**

**AWARDS:** *The President's Challenge Cup for the highest total points in Section C.  
Bedford Cup for the best exhibit in Section C. Kirby Cup for 1st prize in class 57.  
Garden Centre voucher for 1<sup>st</sup> Prize in Class 58.*

## **SECTION D - FRUIT**

59. Apples, dessert, 4, 1 cultivar.
60. Apples, culinary, 4, 1 cultivar.
61. Apples, (culinary and or dessert)3 cultivars, 3 of each.
62. Pears, dessert, 4, 1 cultivar.
63. Plums, dessert, 4, 1 cultivar.
64. Blackberries, cultivated, 6, 1 cultivar.
65. Autumn Raspberries, 6, 1 cultivar.
66. Any other kind of STONED fruit not specified in the schedule. One cultivar, number at the discretion of the exhibitor.
67. Any other kind of NON STONED fruit not specified in the schedule. One cultivar, number at the discretion of the exhibitor.
68. Container of mixed fruit, arranged for effect.
69. Any freak fruit, vegetable or flower, 1 specimen.

**NOTE : All fruit, except peaches and nectarines, must be shown with the stalk and/or calyx attached.**

**AWARDS:** The Blundell Cup for the highest total points in Section D.  
Award for the best exhibit in Section D.  
Award for the best exhibit in class 68.

## **SECTION E - CACTI & SUCCULENTS**

70. Astrophytum Group - 2 plants (includes Digitostigma).
71. Opuntia Group - 1 plant (inc. Grusonia, Maihuenia, Pereskia & Tephrocactus).
72. Matucana Group - 1 plant (includes Arequipa, Denmoza & Oroya).
73. Mammillaria Group - 3 plants. Maximum pot size 4¼". (includes Cochemiea, Dolichothele & Mamillopsis).
74. Ariocarpus Group - 1 plant (includes Neogomesia).
75. Echinocactus Group - 1 plant (inc. Ferocactus, Homalocephala & Leuchtenbergia)
76. Cristate, Monstrose or Variegated cactus - 1 plant.
77. Cacti - 4 plants. Maximum pot size 3½".
78. Mesembryanthemum Group other than Conophytum and Lithops Sub-Groups 2 plants.
79. Lithops Sub-Group - 3 plants (includes Dinteranthus & Lapidaria).
80. Conophytum Sub Group - 2 plants. (includes Berrisfordia & Ophthalmophyllum).
81. Stapelia & Ceropegia groups - 1 plants (includes Caralluma, Duvalia, Hoodia, Orbea, Trichocaulon, Brachystelma, Fockea, Hoya and Sarcostemma).
82. Adenia and Kedrostis groups - 1 plant (includes Adansonia, Bombax, Ficus Pterodiscus, Uncarina, Dioscorea, Gerrardanthus, Ibervillea & Ipomoea).
83. Haworthia group - 2 plants (includes Astroloba and Poellnitzia).
84. Succulents - 4 plants. Maximum pot size 3½".
85. Group of cacti and/or succulents arranged for decorative effect in a space not exceeding a standard seed tray (9" x 15" approx). Backgrounds, accessories etc. may be used.

**Continued on Page:- 14**

## **SECTION E - CACTI & SUCCULENTS (Continued)**

**NOTE:** The lists of genera shown after some classes are not complete.  
Refer to the B.C.S.S. Handbook of Shows for full details.

**AWARDS:** *The Arthur Boarder Award for the best exhibit in Section E.*  
*The Society's Cup for the highest total points in Classes 70-77.*  
*The Hillingdon Succulent Cup for highest total points in classes 78-84.*

**THE FOUNDERS CUP FOR THE BEST EXHIBIT IN HORTICULTURAL CLASSES 1-85.**

## **SECTION F - HANDICRAFTS**

86. Any item knitted or crochet.
87. An item of woodwork.
88. A picture, any medium (except photographic).
89. Stitch work by hand or machine.
90. Any other craft item not mentioned above.

Note: All Items entered in the Handicrafts section must have not been previously entered in an RCHS show.

**AWARD:** *Award for best exhibit in section F*

**Children are welcome to enter in the handicraft section and will be judged on their own merit – age to be stated on entry form (16 or under only). Special award.**

## **SECTION G - PHOTOGRAPHIC**

PRINTS OR ENLARGEMENTS IN COLOUR OR BLACK & WHITE. PICTURES MAY  
BE DIGITALLY ENHANCED Max size up to A4.

91. Gone to seed
92. The seasons glory (a portfolio of 4 photographs)
93. Woodland scene
94. Garden object

**Exhibits must not have been previously entered at RCHS Shows**

**AWARD:** *Award for the best exhibit in the Photographic Section G.*

## **SECTION H - DOMESTIC**

100. Lemon curd.
101. Raspberry jam.
102. Jam, any stoned fruit, named.
103. Marmalade any fruit.
104. Fruit salad - 6 different fruits.
105. Apple dumpling 1 - in pastry.
106. Ginger squares 3 - see recipe on page 15
107. Meat loaf - 1 slice approx 1 cm thick
108. Individual Christmas pudding
109. 3 pickled onions
110. One bottle of home-made soft drink, named. In a clear glass bottle.

**NOTE:** In classes 100 - 105 standard glass jars must be used. (Approx. 1lb (450g)).  
Unless stated any size of cake tin can be used

**AWARDS:** *The Domestic Cup for the highest total points in Section H.*

## **SECTION I- FLORAL ART**

111. Sunset - an exhibit - open staged
112. West End Show - an exhibit to be displayed and named in an alcove  
(supplied) (alcove is 50cm W x 25 D x 100 H)
113. Leaves, Seeds & Grasses) - an exhibit without flowers– open staged.

**AWARDS:** *The Winifred Mealing Cup and Gift voucher for the highest total points in Section I. Award for the best exhibit in Section I.*

---

### **Autumn Show - Section H - Class 106**

#### **GINGER SQUARES**

Ingredients :- 4oz margarine, 7oz dark soft brown sugar, 8oz SR flour, ¼ level tsp Salt, 2 level tsp ground ginger, 3 eggs. ICING 2oz margarine, 8oz icing sugar, 1 level tsp ground ginger, demerara sugar.

Method :- Grease Tin 12” x 9” with melted butter. Cream marg & sugar, beat in eggs one at a time. Sift flour, salt and ground ginger, fold into creamed mixture. Spread in tin and bake 30min at 5/375/180. Cool in the tin.

ICING. Melt margarine in pan with 2 tbsp water and the ground ginger. Sift icing sugar into bowl, add melted ingredients. Beat mixture well, spread on cake and sprinkle with demerara sugar. Allow to set, cut into squares.

## **Class 36 - Autumn Show**

### **R.C.H.S. TOP VASE RULES**

The R.C.H.S. Top Vase Class is for a vase of mixed flowering stems containing a total of between five and 10 stems, taken from a minimum of two different kinds of plants. Please note that it is two different KINDS of plants; two varieties of the same plant are **not** two kinds.

Only fresh, HOMEGROWN flowers can be used in the vase. No dried or silk flowers are allowed.

The display will be judged out of a total of 35 points, split into 25 points for the colour, form, condition, quality and freshness of the flowers on display, and 10 marks for the overall presentation and effect of the flowers in the vase. The vase will be viewed from all directions. Judging of the flowers should be to the normal rules used for other classes.

Stems used in the display must be showing flowers only; no seed heads or berries will be allowed.

The vase can be any shape and size and made from any material, but must be in proportion to the display. No marks are awarded for the vase itself.

No accessories whatsoever – such as bows and additional foliage – will be allowed. Foliage, which is growing naturally from the flowering stem, and still attached to that stem will be allowed. Packing material – including floral foam – to keep the stems in place is allowed.

The winner of the Top vase class will receive a Garden voucher.

### **NOTES FOR EXHIBITORS AND JUDGES**

Flowering stems can be taken from ANY flowering plant. The different kinds of plants need to be taken from different genera. For instance, pinks, carnations and sweet william – which are all dianthus – would not be classed as different kinds.

Only fresh, home-grown flowers can be used in the vase. No dried or silk flowers are allowed.

A vase by definition, is any vessel that can be used to hold cut flowers and is taller than it is wide at its widest point.

The R.C.H.S. Top Vase class is open for anyone to enter, and judges should use their discretion, bearing in mind that the entries may come from inexperienced exhibitors.

Judges note the display has to be viewed all round.

The points awarded should be clearly marked by the judges on the exhibitors' cards.

Any queries that may arise, regarding anything other than the above rules, should be referred to, and decided by, the show officials.

Failure to abide by the rules will lead to disqualification.

**Class 58 - Autumn Show**

**R.C.H.S. TOP TRAY RULES**

The R.C.H.S. Top Tray Class is for a collection of three types of vegetables taken from the following list of eight. The quantity of each vegetable required for the collection is given in brackets and each type must consist of the same variety: carrots (3 or 4), cauliflowers (2), onions (3 or 4), parsnips (3 or 4), peas (6 pods), potatoes (3 or 4), runner beans (6 pods), tomatoes (6). Each type of vegetable will be judged out of a total of 20 points. This is split into three sections as follows; seven points for size shape and colour; seven points for condition; six points for uniformity. The overall mark will therefore be out of a total of 60.

All vegetables are to be displayed for effect. The vegetables must be displayed within an area measuring 45cm by 60 cm (18 by 24 in), without bending any part of them. No part of any exhibit may exceed the size of the tray. A tray or board measuring 45cm by 60 cm (18 by 24 in) can be used to display the vegetables, or the area can simply be marked on the staging. Where a tray has a lip or edge, it is the internal measurements that must not exceed 45cm by 60 cm (18 by 24 in).

A black cloth is permitted, and the tray may be painted. Parsley is allowed for garnishing, but no other foliage or accessories, such as plates, sand, rings and so on, will be allowed. Onion tops may be tied or whipped using raffia or string.

The winner of the Top Tray class will receive a Garden voucher.

**NOTES FOR EXHIBITORS AND JUDGES**

Carrots and parsnips must have foliage trimmed back to 7.5cm (3in).

Peas and beans must be displayed with some stalk attached.

Tomatoes must be displayed with calyces (the green flower bud case).

Judges may handle exhibits, open pods and so on to check for quality.

The tray, board or staging must not be cut or mutilated in any way at all - such as cutting holes for standing onions in.

Judges should use their discretion when judging the Top Tray class, remembering that entries may not come from regular exhibitors.

The points awarded should be clearly marked by the judges on the exhibitors' cards.

Any queries that may arise, regarding anything other than the above rules, should be referred to, and decided by, the show officials.

Failure to abide by the rules will lead to disqualification.

~~~~~

**Ruislip Central Horticultural Society  
ENTRY FORM  
(ONE FORM FOR EACH EXHIBITOR)**

NAME.....Membership No.....

ADDRESS.....

CLASSES TO BE ENTERED.....

.....

Entries to be sent by 8pm on the Wednesday preceding the Show

# RULES

## **EXHIBITORS ARE ADVISED TO STUDY THE RULES CAREFULLY BEFORE MAKING ENTRIES.**

1. All exhibitors must be members of the Society.
2. All produce shown shall have been grown by the exhibitor and shall have been their exclusive property for at least two months immediately preceding the date of the exhibition, excepting material used in floral arrangements and produce in the Domestic Section.
3. Exhibits can be staged from 09.15 a.m. to 11.00 a.m. on the day of the show, after which time all exhibitors and their assistants must leave the place of the exhibition.
4. An exhibitor showing for competition flowers, fruit or vegetables not in conformity with the Schedule or Rules shall forfeit all awards in the class where the infringement occurs.
5. Complaints or protests, in writing, must be handed to the Show Secretary before 3.30 p.m. on the day of the Show and shall be accompanied by a deposit of £1.00, which shall be refunded if the Show Committee upholds the complaint. The decision of the Show Committee shall be final.
6. Under no circumstances may an exhibit be removed from the staging or Show before the advertised time for prize giving.
7. The Show Committee shall have the exclusive right to accept or refuse any entry.
8. Entries close on the WEDNESDAY prior to the Show.
9. The judges shall be appointed by the Show Committee and shall be empowered to make or withhold awards as they see fit. The judge's decision shall be final.
10. The vases allowed are those provided by the Society. All other containers are to be provided by the exhibitor.
11. Unless otherwise specified in the Schedule, the foliage used with cut flowers shall be of the same species as the flowers.
12. An exhibitor shall not have more than one entry in any one class for competition.
13. Points for special awards shall be allotted in accordance with the following system; 1<sup>st</sup> Prize = 5pts; 2<sup>nd</sup> = 3pts; 3<sup>rd</sup> = 2pts; 4<sup>th</sup> Prize or H.C. = 1pt. Double points will be awarded to certain classes (e.g. collections of vegetables) as stated in the schedule and these points will be used in assessing aggregate points for cups.
14. Points gained for freaks, heaviest potatoes, or heaviest Marrow's & Squashes shall not be valid for inclusion in aggregate of points for cups.
15. No two members of the same household may exhibit in the same class, except in floral arrangement, , domestic, cacti & succulent and photographic classes.
16. In the flower classes except where specified in the Schedule **one or more varieties may be shown**.
17. A novice is defined as an exhibitor who has not won a first prize in the section referred to, in any prior season, at any show.
18. The authority for classification in the Cactus and Succulent Classes shall be in the British Cactus and Succulent Society Handbook of Shows (current edition).
19. In the Floral Art Classes, judging will be in accordance with the N.A.F.A.S. Schedule of Definitions unless otherwise specified.
20. In all other cases **judging will be according** to the R.H.S. Rules and those of the applicable Specialist Societies.
21. The Society will not be held responsible for loss or damage to any person or property, however caused, before, during or after the show.
22. **Exhibitors are urged to include small labels naming the cultivars used in exhibits of flowers, plants and horticultural produce. This will add greatly to the interest of the Shows and to your own repute as exhibitors.**

**NOTE:** Throughout this schedule the words "kinds" and "cultivars" are used in the following sense:  
"Sweet peas and Roses" are distinct *kinds* of flowers. "Grandpa Dickson and Silver Jubilee" are distinct cultivars of Roses.

**ENTRY FORMS:** Please use one per person. Extra forms are available from the committee.

**This Schedule - Has been sponsored by**  
**Penman Johnson Solicitors LLP**

**Well established local legal experts**

**Accident & Injury Claims, Employment Problems**

**Divorce & Family Problems, Conveyancing**

**Wills & Probate**

**No Win No Fee available for Accident / Employment Claims**

**Contact : Jacqueline Alderton**

**Telephone: 01923 225212. email – [jalderton@penmanjohnson.com](mailto:jalderton@penmanjohnson.com)**

---

**Ruislip Central Horticultural Society**  
**ENTRY FORM**  
**(ONE FORM FOR EACH EXHIBITOR)**

NAME.....Membership No.....

ADDRESS.....

CLASSES TO BE ENTERED.....

.....  
Entries to be sent by 8pm on the Wednesday preceding the Show.

---

**Ruislip Central Horticultural Society**  
**ENTRY FORM**  
**(ONE FORM FOR EACH EXHIBITOR)**

NAME.....Membership No.....

ADDRESS.....

CLASSES TO BE ENTERED.....

.....  
Entries to be sent by 8pm on the Wednesday preceding the Show.

## FOR YOUR DIARY 2012

Meetings take place in St. Lawrence's Church Hall, Eastcote, HA5 3SJ.  
Doors open 7.30pm, Meetings Start 8pm.

### Main Society

- February 21<sup>st</sup>** AGM / Cheese and Wine social
- March 20<sup>th</sup>** "Some Like it Hot" by Annie Godfrey  
A return visit by the popular speaker from Daisy Roots Nursery in Hertfordshire –  
Bringing Plants
- April 14<sup>th</sup>** (Saturday) **Plant and Seedling Exchange** Coffee Morning/Fund Raiser Hosted by Margaret  
McIntosh @ 106 Evelyn Avenue, Ruislip. 10am to 12pm.
- April 17<sup>th</sup>** "Discovering Hertfordshire's Wild Plants and Landscape" Talk by Neale Holmes- Smith.
- March 31<sup>st</sup>** Spring Show at the Great Barn
- May 13<sup>th</sup>** "Malvern Spring Show" (Sunday) RCHS outing. Dept 8 am £33.00 ##
- May 15<sup>th</sup>** "Containers with a Difference" by Kathy Brown  
Many of you may have visited Kathy's lovely garden, The Manor House in Stevington,  
Bedfordshire and sampled her tasty cakes, bought her cards or read her books.
- June 23<sup>rd</sup>** Summer Show at the Great Barn
- July 7<sup>th</sup>** (Saturday) Cheese and Wine evening social fund raising event at Hill Farm  
(further details to follow)
- September 15<sup>th</sup>** Autumn Show at the Great Barn
- September 18<sup>th</sup>** "Skulduggery in the Shrubbery" by Stefan White  
The inspiring true story of John Tradescant & his family 17<sup>th</sup> Century gardener to Royalty,  
founder of the world's first museum, widely travelled plant collector, adventurer and collector  
of nature's rarities, all stolen by a rascally lawyer who took the credit. Witchcraft, the last  
remaining dodo, a unicorn's horn, Kings and Queens, intrigue and treachery all feature as well  
as the extraordinary number of plants first introduced to the country by the pioneering  
gardener.
- October 16<sup>th</sup>** "A Garden for all Seasons" by David Fitton MBE.  
This talk covers practical design ideas, colour, form and interest in the garden throughout the  
seasons of the year.
- October 20<sup>th</sup>** (Saturday) Fun Quiz and Supper \*\*\*
- November 20<sup>th</sup>** "The Green Carnivore's" by Professor Sandy Primrose.  
A return visit of this excellent speaker.

\*\*\* Tickets from Tony McDonnell - 01895 677925

## Tickets from Angela Porter -

Talks: Members £2.00 – guests £3.00 includes tea/coffee and biscuits.

### CACTUS SOCIETY MEETINGS

Meetings are held on the 3<sup>rd</sup> Monday of each month, in the  
Manor Farm Hall, Ruislip, HA4 7QL (in the car park).

Further details from David Minnion. ☎ 0208 868 7927

Members are welcome to ALL of the above meetings.